

**MAGNA.** Glaskeramik  
Straße der Einheit 18  
D - 06179 Teutschenthal  
T. +49 346 01 - 397 00

[info@magna-glaskeramik.com](mailto:info@magna-glaskeramik.com)  
[www.magna-glaskeramik.com](http://www.magna-glaskeramik.com)

11/2019. Errors and misprints reserved.

© Jean-Pierre Cousin - Omnia



**MAGNA.**  
GLASKERAMIK



**Our Glaskeramik is sustainable –  
thanks to 100% recycled glass.  
Handmade in Germany.**



**x 8**

**= 1 m<sup>2</sup> Glaskeramik**





## OUR PRODUCTION PROCESS

Magna Glaskeramik is a material of crystalline structure, translucent and with lighting capabilities. Its patinated, natural surface has an extraordinary textured finish.

Magna Glaskeramiks **production process** is unique and displays a fascinating combination of high tech manufacturing and sustainable material sourcing. Glaskeramik is made 100% from the waste in making German glass production. In this way the industrial waste of glass bottle and solar glass production is prepared into particular **shards and granulate** form. These thousands of

shards are sorted and then sintered under a patented computer-controlled programme.

Thereby the unusual character of the glass comes out of it becoming from part crystal, **without force of pressure or additives**, only using temperature and time controls.

Finally an extremely precise **cooling programme** reduces the tension in the material to a minimum such that it is annealed and not toughened, a character more like stone than safety glass.



## OUR COLOURS

All available colours in both polished and patinated surface.

All colours are in **stock sheets**

2800 x 1250 mm patinated | polished\* | matt\*

3500 x 1500 mm patinated | polished\* | matt\*

\*Polished or matt finishes can have smaller sizes, e.g. 2700 x 1200 mm or 3400 x 1400 mm.

**Thickness:** 20 mm Standard | 16+30 mm Special



Polar White



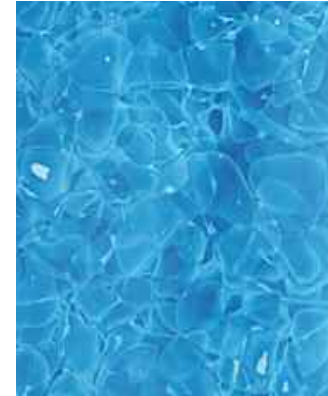
Ice Nugget



Jade



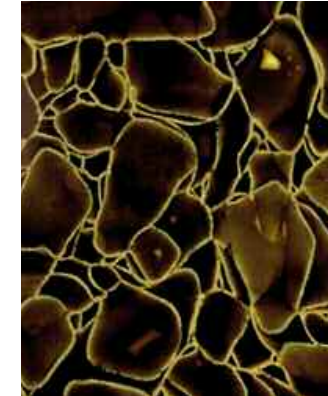
Blue Sky



Ocean Blue



Green



Champagne Brown



Black



© Lavisio



© Tala





© RBS Elektroinstallation GmbH



Glaskeramik-Neolith-Showroom Düsseldorf



© Baas



Design: NAARO

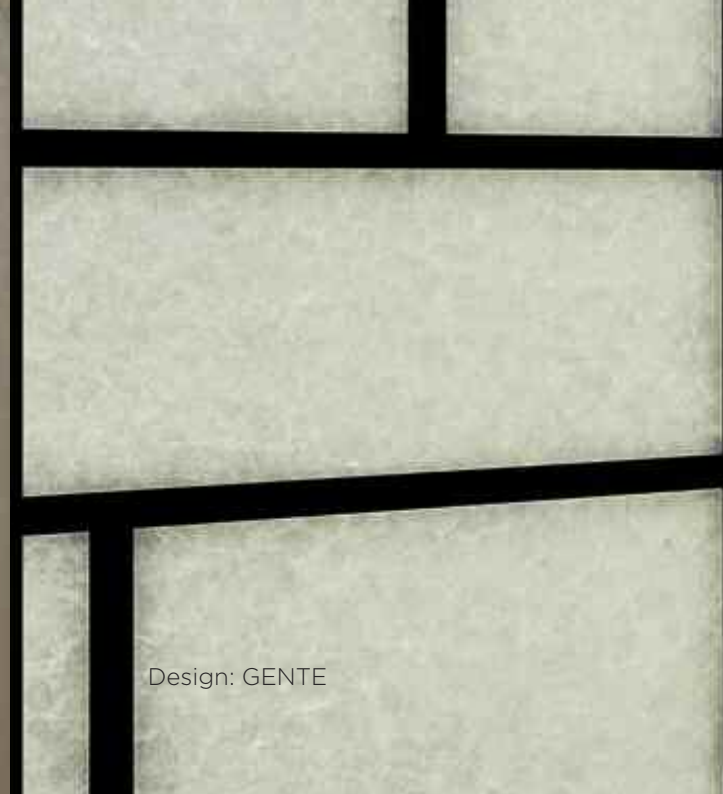
## OUR OBJECTS

Glaskeramik – a fascinating material for interior architecture which offers a wide spectrum of application possibilities; in bathrooms, kitchens, shops and expositions, vanities, sinks, shower screens, kitchen worktops and splashbacks, floor slabs, window reveals, shelving, receptions, desks and column cladding, sun screens and office dividers.

Aside from this Glaskeramik is an exciting solution for the furniture and design arenas. The material (double polished) can be used as a unique room divider, interior wall cladding and even as large format external façade. Here the play of light, half reflection and translucency of the surface is especially exciting and new. Also the material combines and contrasts well with other materials, especially glass and stone.



© Fliesen Götting



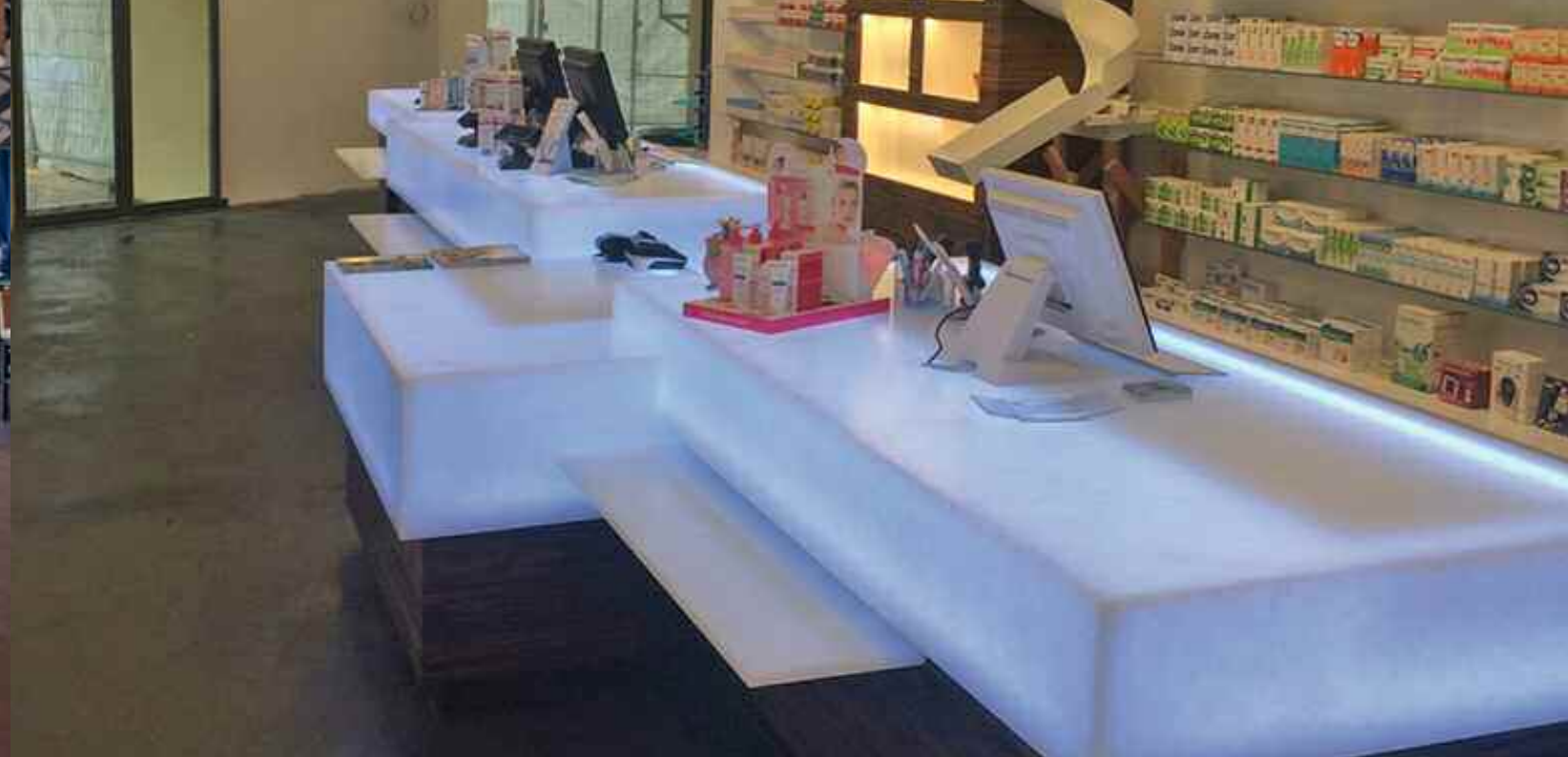
Design: GENTE







Sport-Arena Leipzig  
Photo: Marcus Bleyl







Restaurant GOUD, Rotterdam | realization: Michel Opreij & Beisterveld



Discothek STAR, design+realization: popup bau, Herford  
Photo: Martin Stöver









Infobox St. Sebalduskirche, Nürnberg  
Photo: Marcus Bleyl



MEHR.WERT.PAVILLON, Buga Heilbronn  
Photo: MWP | 2hs | credit Felix Heisel





Elbow Table Set Magna Chrome by Causa  
Design: Andreas Kowalewski



pulpo

MAGNA<sup>®</sup>  
GLASKERAMIK

font  
Sebastian  
Herkner

MADE IN  
GERMANY

FONT by PULPO  
Design: Sebastian Herkner



Design: TALA®



Piano, Masters of LXRY  
Stone & Skills | Jan Reek natuursteen | Design: Sandra Jansen





Cannon Place Station, London



GLA Chukyo Hall, Prayer Hall, Nagoya, Japan  
Photo: Shigeo Ogawa



DM Market Schondorf; architects: Rossa & Partner  
Polar White | Green patinated, backlit



Fire station Neukirchen, Architect: Markus Kasuch  
Polar White patinated





Museum Folkwang, Essen, architect: David Chipperfield  
Photo: Christian Richters



Museum Bauhaus, Weimar  
Photo: Andrew D. Alberts  
Stripes: Polar White patinated,  
backlit





Talbot Gateway, Blackpool



Mixed use building Trondheim, Norway  
Photo: Henrik Larsen